

★
**Victory
Tugs**

A *Perfect Blend of
Luxury Interiors,
Workboat Integrity,
And Dependable
Ocean Cruising
Capability...*

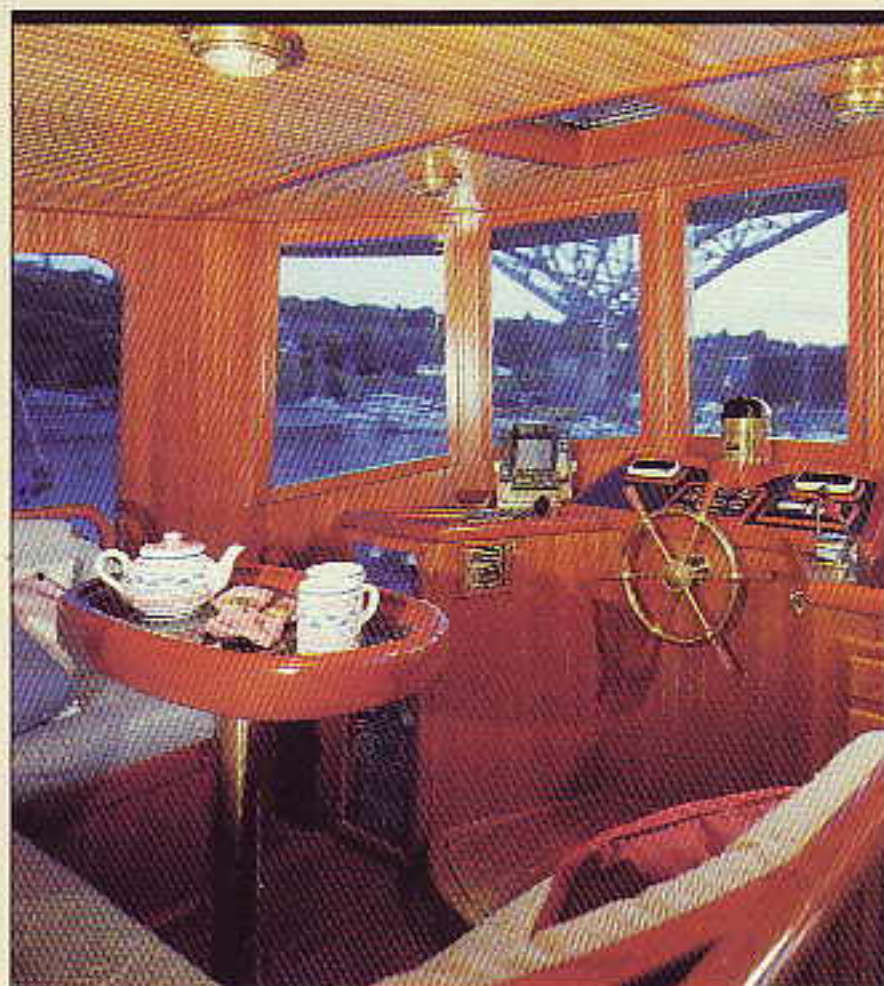


T *he VICTORY TUG is a
yacht of unmistakable
character; a unique
blend of the
charm and romance
of yesterday with
the comfort and con-
venience of today.
Like the working*

*tugboats in her heritage, she
is built with rugged ocean
going capabilities. Her rich
spacious interior establishes
her as a yacht with distinct
style and elegance. En-
gineered for reliability; built
for seaworthiness and
designed for classic good
looks, the VICTORY TUG
captures the imagination
of all who view her.*

Uncompromised workboat integrity

James Backus, N.A., has designed the VICTORY TUG with an efficient full displacement hull capable of providing excellent fuel economy at cruising speeds. A full length ballasted keel with an oversized rudder furnishes stable tracking and responsive steering. Her fine entry and clean rounded sections forward allow THE VICTORY TUG to move smoothly into head seas. The VICTORY TUG is a rugged, no-nonsense yacht, perfectly suited for long-range cruising in rough ocean conditions. Few yachts built today can match her close attention to the primary design considerations



of strength, seaworthiness, comfort and safety.

TOPSIDES: Classic tug-boat styling affords major advantages: The high sheer forward keeps waves from breaking aboard and large freeing ports quickly remove water from the decks. Tall bulwarks provide safety for the wide decks and allow easy

line handling when docking. Below the spacious aft deck, lazarettes provide abundant storage for cruising equipment. The upper boat deck provides a secure place for the tender and a perfect lounging area.

BELOW DECKS: The interior layout and furnishings of the VICTORY TUG reflect the commitment to elegance, luxury and comfort. Solid wood joinery, teak and holly soles, plush fabrics and spacious living areas are well suited for extended cruising. Plenty of light accents rich wood floors and traditional solid teak wainscoting. A built-in settee converts to a double berth for extra guests.

GALLEY: Great food and boating go hand-in-hand. The large U-shaped galley is a gourmet's dream come true. Some features include: double stainless sinks, wide counter tops, plenty of drawers and cabinets, four burner stove with oven and large separate compartments for refrigeration and freezer.

PILOT HOUSE: The enclosed pilot house has Dutch doors on both sides to

provide plenty of ventilation on warm summer days. Large windows allow 360 degree visibility. Space is

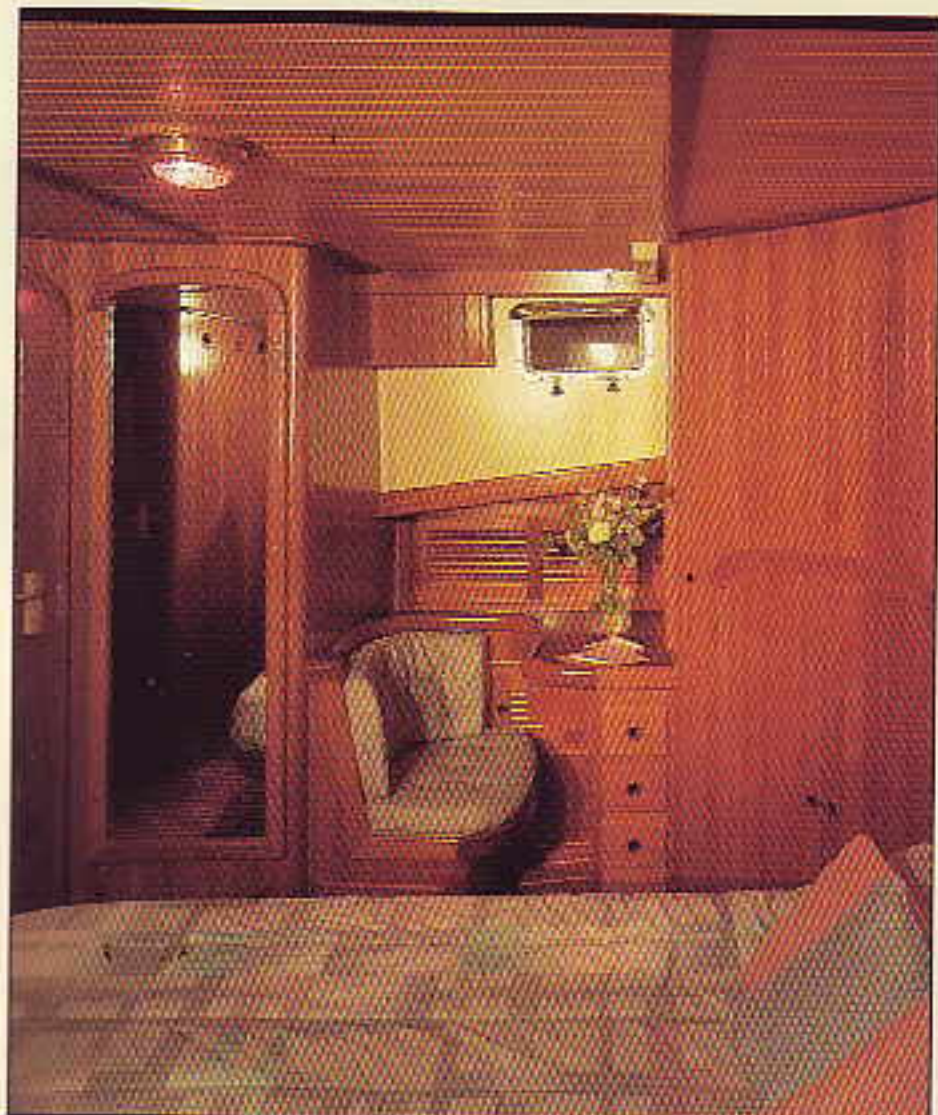


provided for an extensive array of navigation equipment. Luxurious pilot house settees assure comfort for long passages. The VICTORY TUG is also available with an optional outside helm station on top of the pilot house for enjoying summer days.

STATEROOMS: The state-rooms reflect the combination of warmth and functionality found throughout the VICTORY TUG. The double berths, built-in bookcases and abundant hanging lockers are done in rich solid



Luxurious appointments offer unequalled livability



providing tremendous strength and protection. The hull and cabin have been insulated to provide efficient moisture and temperature control. Removable stainless steel water tanks, with separate shut off valves and individual fills, provide plenty of fresh water. Epoxy coated black iron fuel tanks, also

woods. Individual heads with separate showers are beautifully appointed with marble counters, brass fixtures and teak cabinets.

CONSTRUCTION: When a VICTORY TUG is built, no expense is spared and no shortcuts are taken. The result is a yacht of enormous structural integrity, insuring years of safe and trouble free cruising. The hull and deck are built with reinforced layers of solid fiberglass. ISO Phthalic gel coat is used for its superior longevity and water resistance. The decks are solid fiberglass re-enforced with a unique FRP stringer system. A full length rubrail is molded into the hull

removable, permit a cruising range of approximately 3,000 miles for the 49' tug. (The 37' range is approximately 1,200 miles.)

ENGINE: The engine room has been engineered to incorporate excellent access, convenient work space and ample room for accessory



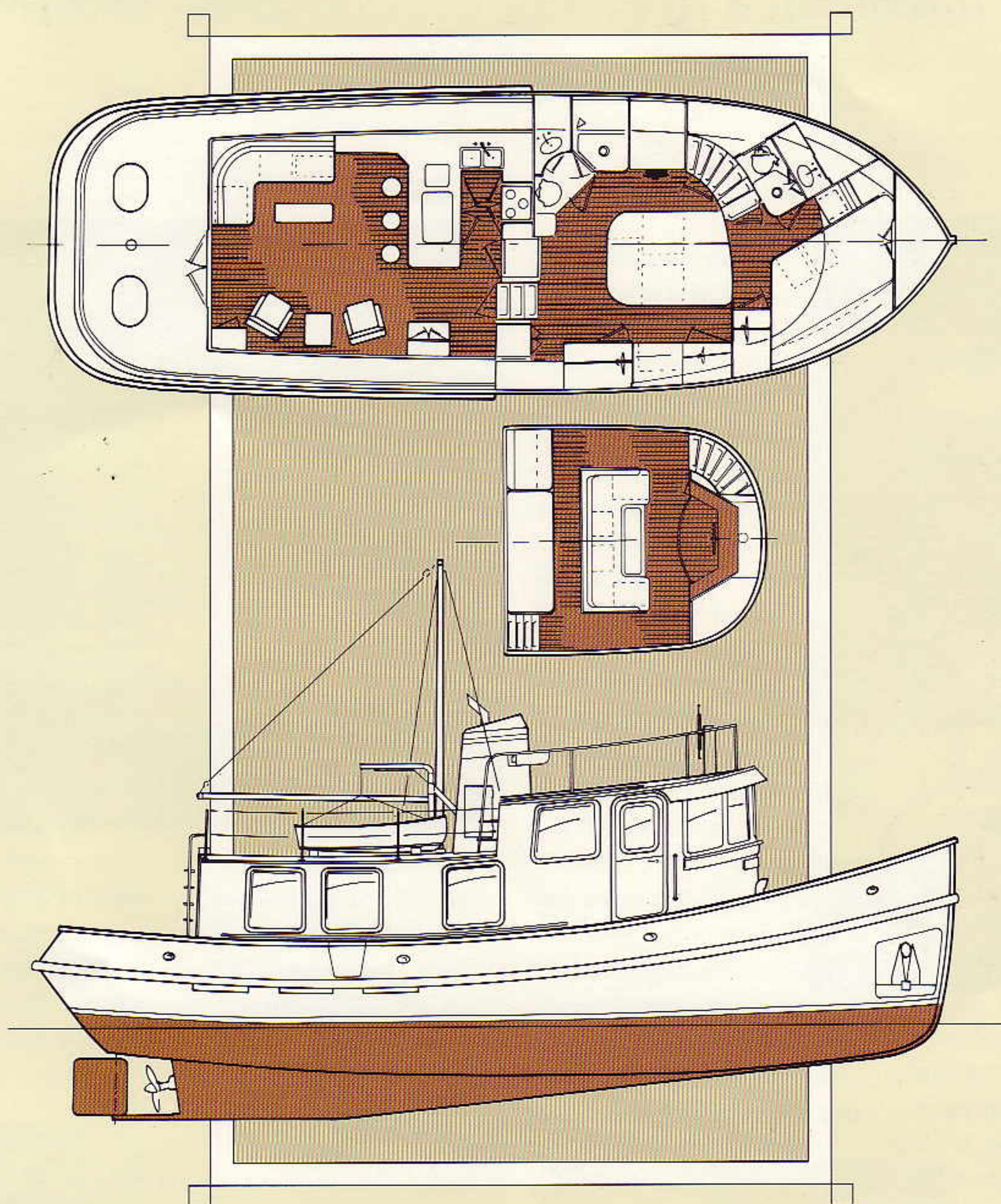
equipment. To achieve the highest level of reliability, performance and fuel economy, the VICTORY TUGS are powered by Cummins engines.

These features combine to make one of the finest yachts available in the world. The VICTORY TUG represents the practical application of off-

shore cruising design, the elegance of hand crafted wood interiors and the efficiency of a full displacement hull.



SPECIFICATIONS

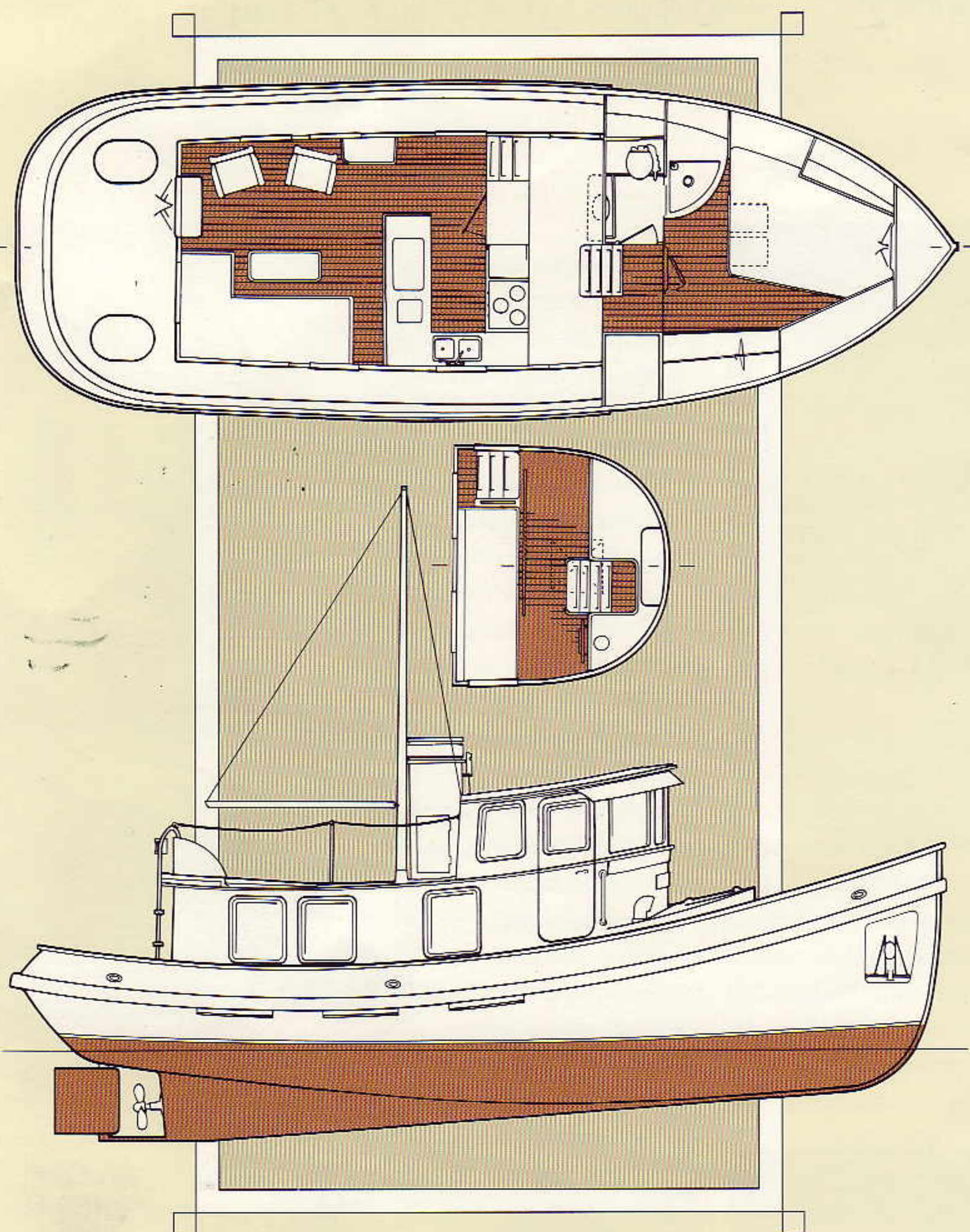


LOA ~ 48' 10"
LOW ~ 45'
Beam ~ 16'-8"
Draft ~ 4'-10"
Displacement ~ 58,000 lbs
Ballast ~ 8,500 lbs.

Engine ~ 250 hp Cummins
Fuel Tankage ~ 1100 gal.
Water Tankage ~ 500 gal.
Range ~ 3,000 mi.
Accommodations ~ 4 doubles
Headroom ~ 6'-5"

Designer: Jim Bachus, N.A.

SPECIFICATIONS



LOA ~ 37'
 LOW ~ 33'4"
 Beam ~ 13'2"
 Draft ~ 3'6"
 Displacement ~ 20,500 lbs
 Ballast ~ 3,000 lbs.

Engine ~ 150 hp Cummins
 Fuel Tankage ~ 250 gal.
 Water Tankage ~ 185 gal.
 Range ~ 1200 mi.
 Accomodations ~ 2 doubles
 Headroom ~ 6'-4"

Designer: Jim Bachus, N.A.



Lord Nelson Yachts

Lord Nelson Yachts, Inc.

927 N. Northlake Way

Seattle, WA 98103

Tel: (206) 548-1017

Fax: (206) 548-1050

Dealer:

CRUISING YACHTS

927 N. NORTHLAKE WAY, # 100

SEATTLE, WA 98103

200 FT. WEST OF D.L. FREEMAN

(206) 532-1119